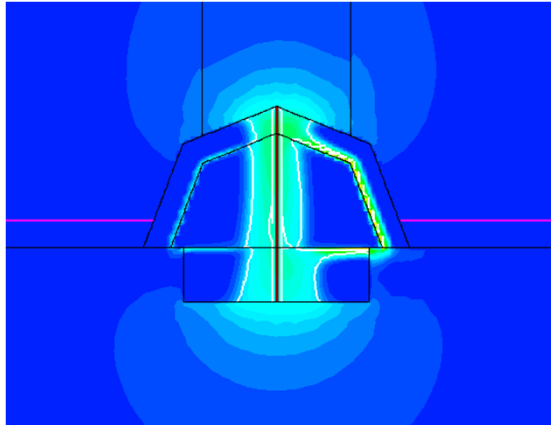
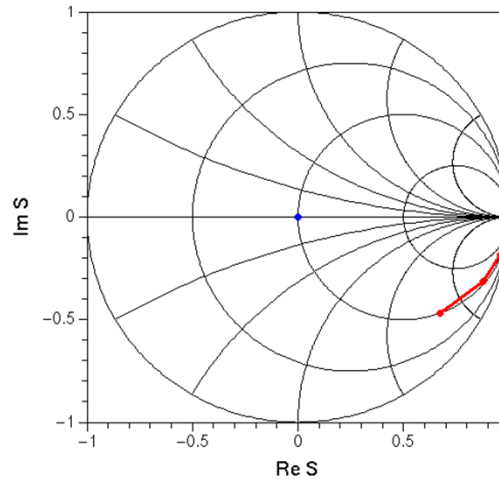


# Simulation Works

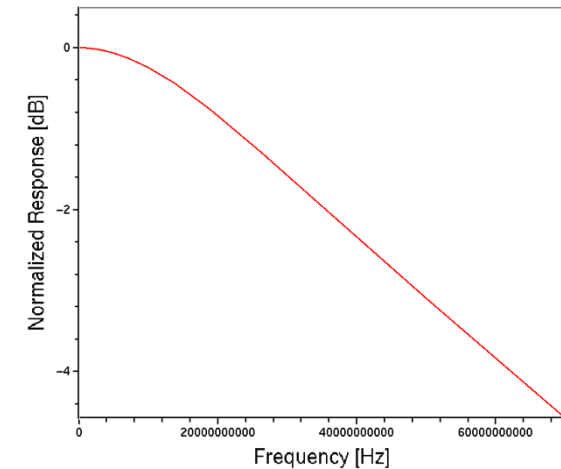
Electric field



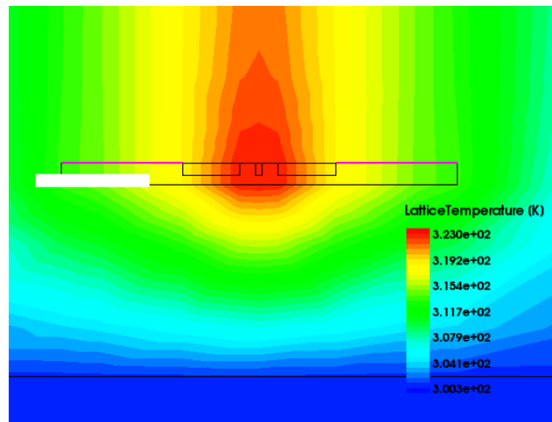
Electrical S-parameter



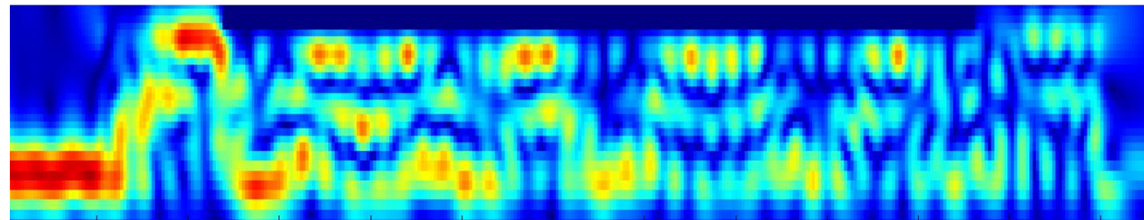
O/E response



Thermodynamic



Finite-difference time-domain (FDTD)



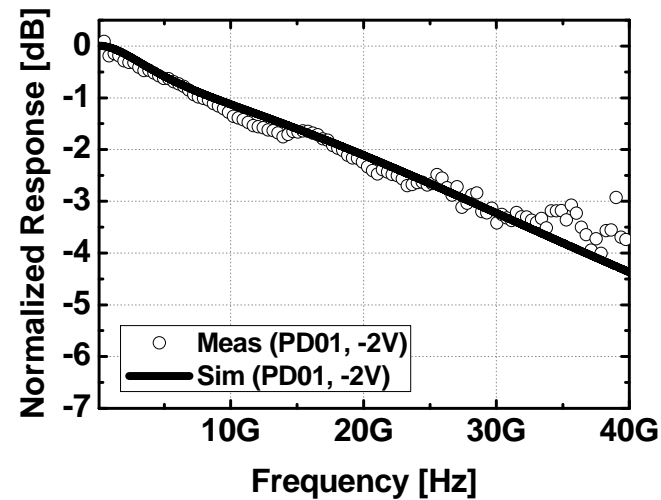
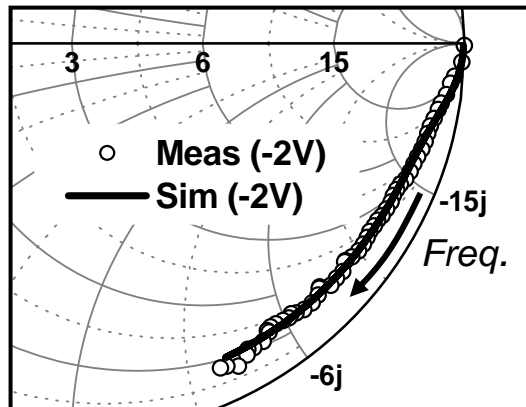
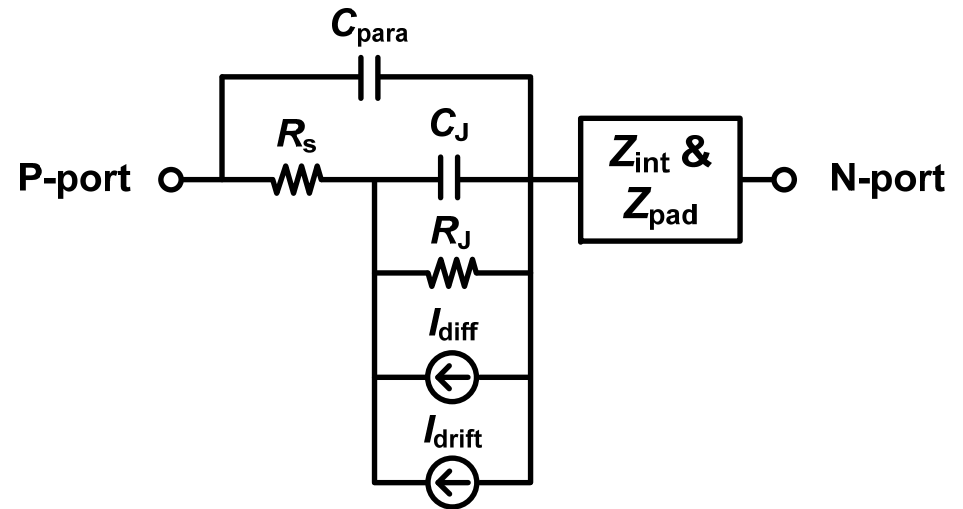
- Optical device analysis using TCAD Sentaurus and Lumerical FDTD simulation tools.

# Measurement Works

- Measurement
  - Compare two types of IHP Ge-PDs
  - Ge-PD: saturated photocurrent  
→ Optical power dependency

- Measurement setup w/ 명진, 민규

- 2015 PC w/ 명진



# Measurement Setup Works

